



542 3<sup>Rd</sup> Street, Lake Elsinore, CA 92530

**TEL: 951-245-8669, FAX: 951-245-5481**



## **ACURA TL 2004-2008**

U.S. PATENTS

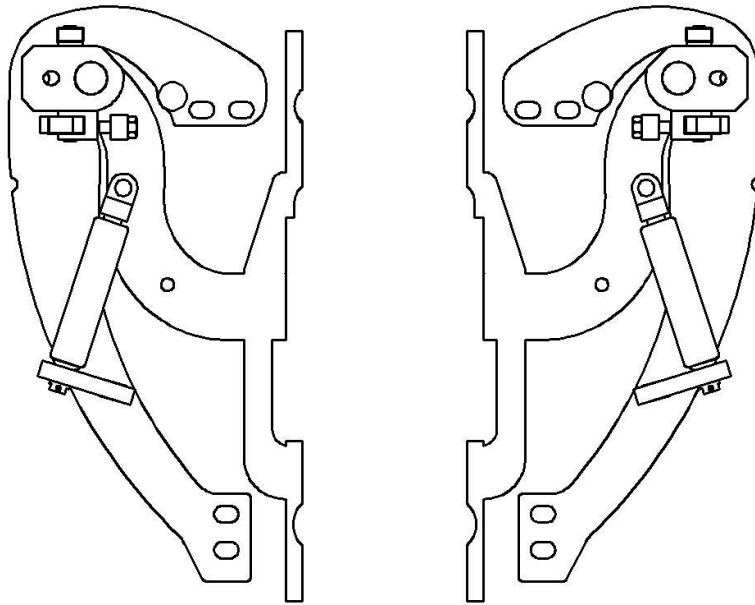
#6,808,223; #6,845,547; #7,140,075; #7,059,655

PATENTS AGGRESSIVELY ENFORCED!

**PLEASE CAREFULLY READ ALL INSTRUCTIONS BEFORE  
ATTEMPTING TO INSTALL THIS PRODUCT.**

**FOR QUESTIONS PLEASE  
CONTACT US AT (951) 273-1069**

*Note: The side markers will no longer work after installation.  
Driver's side wire harness needs to be extended.*



**THIS KIT INCLUDES:**

- 16 M8-1.25X30MM BOLTS WITH WASHERS
- 2 SHOULDER BOLTS WITH WASHERS
- 2 PINS
- RIGHT AND LEFT HINGE ASSEMBLY
- 2 SHOCKS 560 PSI

**TOOLS REQUIRED FOR INSTALLATION:**

	<ul style="list-style-type: none"> <li>➤ AIR RACHET, GRINDER AND CUTTER.</li> </ul>
	<ul style="list-style-type: none"> <li>➤ 7MM, 8MM, 10MM, 11MM, 13MM, SOCKETS AND EXTENSION.</li> </ul>
	<ul style="list-style-type: none"> <li>➤ FORK AND PHILLIP'S SCREW DRIVERS</li> </ul>
	<ul style="list-style-type: none"> <li>➤ SPACERS FOR THE DOOR GAP.</li> </ul>
	<ul style="list-style-type: none"> <li>➤ 3/16 ALLEN WRENCH</li> </ul>
	<ul style="list-style-type: none"> <li>➤ 1/4 TORX BIT</li> </ul>
	<ul style="list-style-type: none"> <li>➤ 9/16 WRENCH</li> </ul>
	<ul style="list-style-type: none"> <li>➤ LOCKTITE RED</li> </ul>

**OTHER TOOLS MAY BE NEEDED DEPENDING ON YOUR VEHICLE.**



**(Note: The pictures on the manual are for reference only they may not match your vehicle.)**

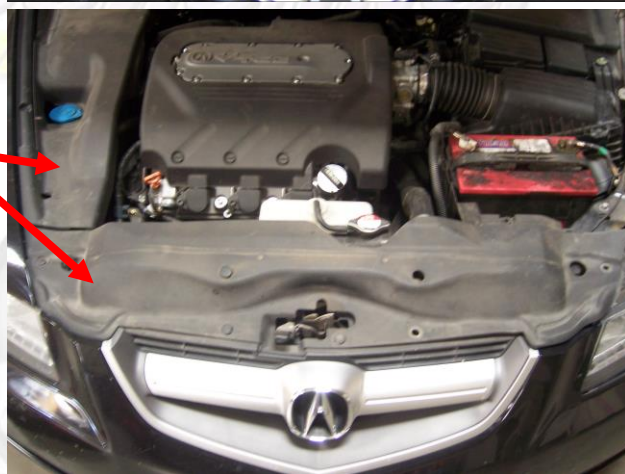
1) Disconnect the battery.

2) Remove fender:

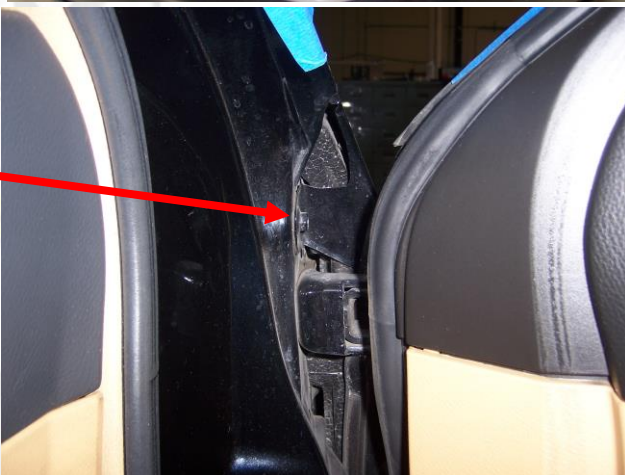
Remove all Phillip's screws and fasteners from the wheel well.



Remove all the rubber/plastic cover from the engine bay.



Open the door and remove 1 bolt holding the fender to the body.



After removing the 10mm bolt, pull back on the bumper to gain access to (2) 10mm bolts securing a plastic bracket. After removing the top bracket remove the other (2) bolts securing the fender to the body.





After removing the fasteners on the wheel well, pull down on the skirt and remove the 10mm bolt securing the fender to the body.



Remove the bolts located on the top of the fender including 1 bolt under the windshield/hood cover.



Now you will be able to carefully remove the fender.

**3) Remove the door catch:**  
Open the door and remove bolts from the body and from the door. Push the door catch inside the door.



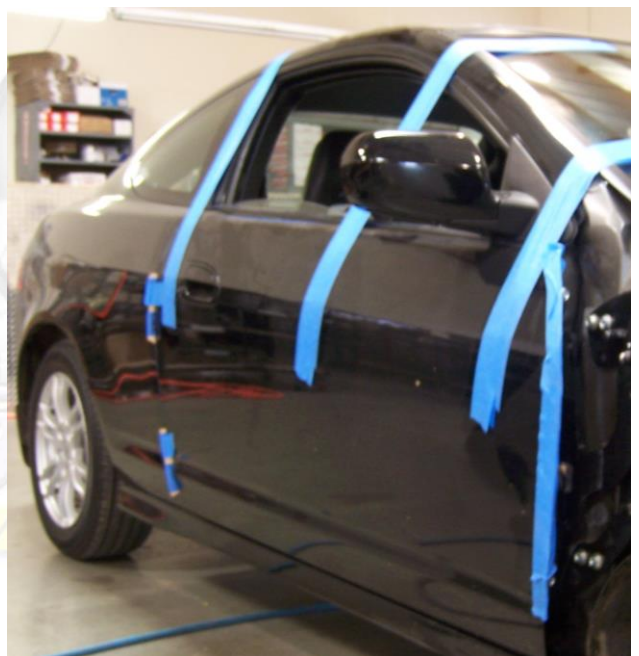
You will need to remove the door panel to retrieve the door catch.

#### **4) Factory door hinge removal**

Close door and use painter's tape to secure the door in preparation for factory hinge removal.

You will need a 12mm socket to remove the factory hinges.

*Hint\* (You can make your spacer out of paint sticks and about 8-10 turns of blue painters' tape)*





Close the doors and mark the factory location of the door in the horizontal and vertical (pic 1 & 2) positions.



Also make sure to mark the distance between the apron and the edge of the door (pic 3 & 4) as shown, this will ensure a factory look and it will make realigning the door with the fender fast and easy.

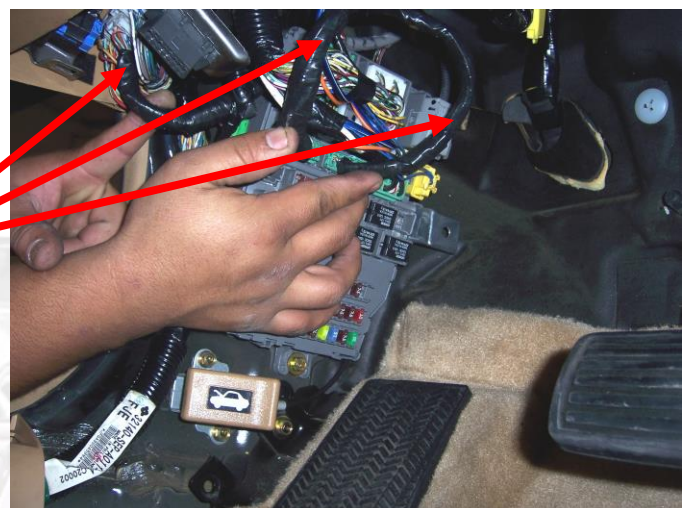


After marking the door and disconnecting the wire harness remove the door factory hinges.

### 5) Wire modifications.

Remove the kick plate and the cover under the steering wheel. You will have to extend the wires on 3 of the wire harnesses on the Driver's side as shown by the arrows.

*32 wires and 64 wire connectors have been enclosed with your kit.*

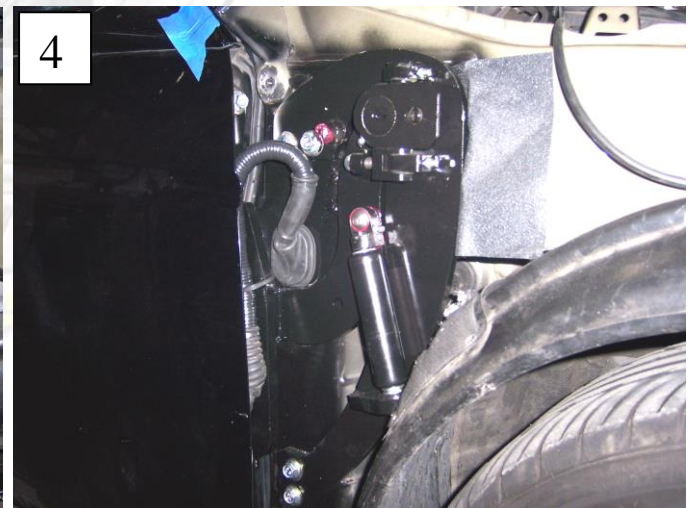
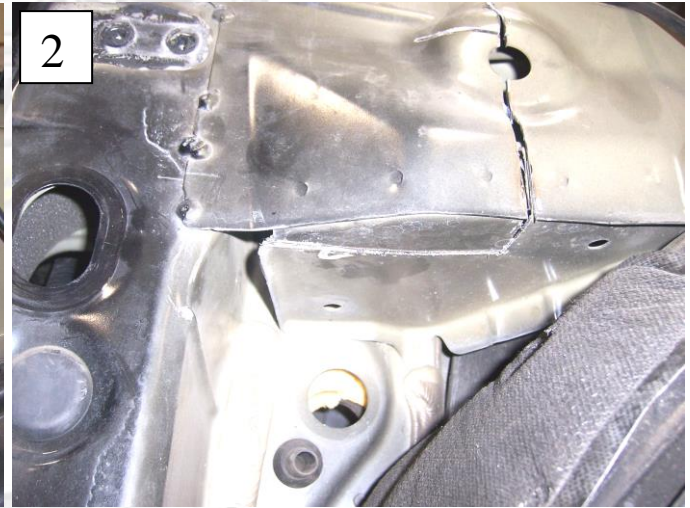


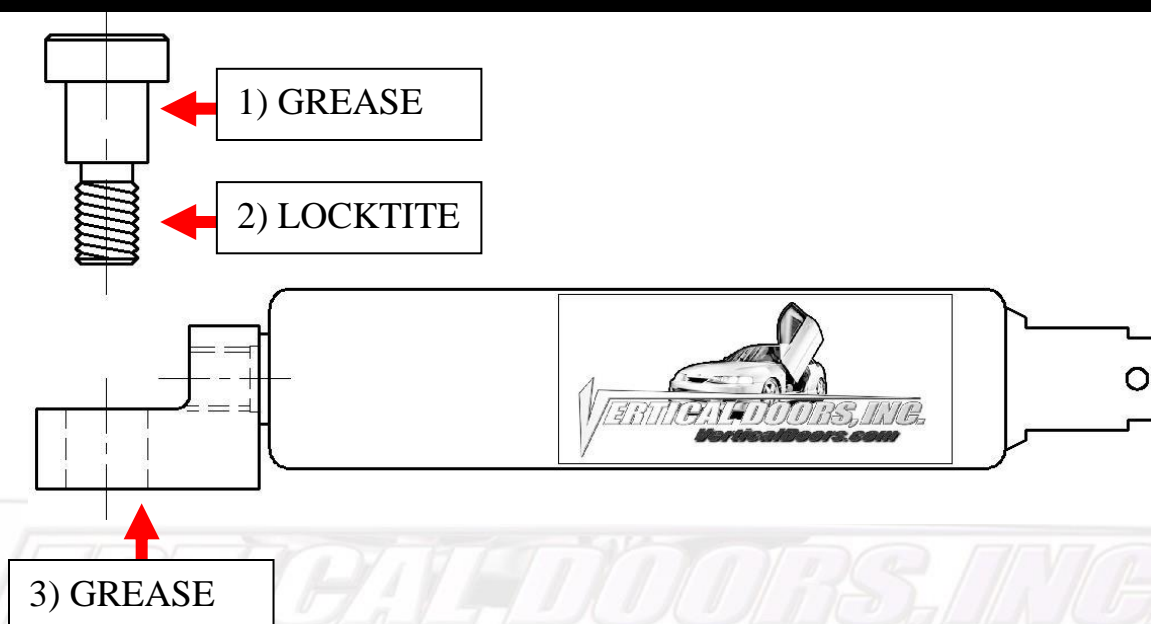


**6) Install new Vertical Doors Inc. system:**

In order for the vertical hinge to sit flat against the apron you will have to cut the apron as shown on pictures 1 & 2 and then bend the metal in as shown on picture 3 so that the new VDI kit sits against the metal but is not pushed by it. Make sure to apply rust prevention paint on any parts where you have cut or removed paint. *\*for added protection we use "3M Safety Walk" as shown on picture 4.*

*Hint\* Tighten the bolts on the door first and then install the bolts on the body.*



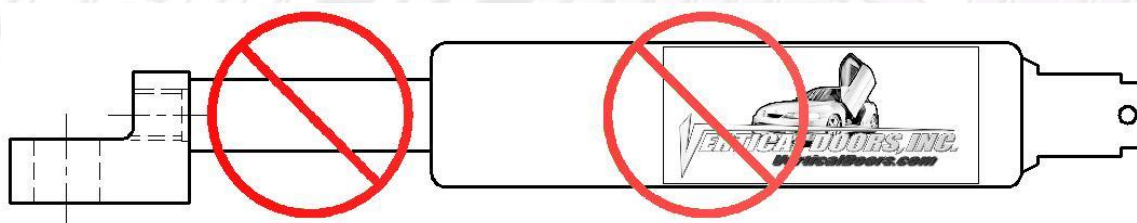


**\*IMPORTANT STEP: DO NOT SKIP THIS STEP. THIS STEP IS CRUCIAL IN YOUR INSTALLATION PROCESS, IF THIS STEP IS NOT COMPLETED WHEN INSTALLING THE VERTICAL DOOR KIT; ALL WARRANTIES ARE VOIDED, AND MAY CAUSE FUTURE PROBLEMS WITH YOUR VERTICAL DOOR SYSTEM.**

1<sup>ST</sup>, make sure you put grease on the body of shoulder bolt where the arrow is pointing.

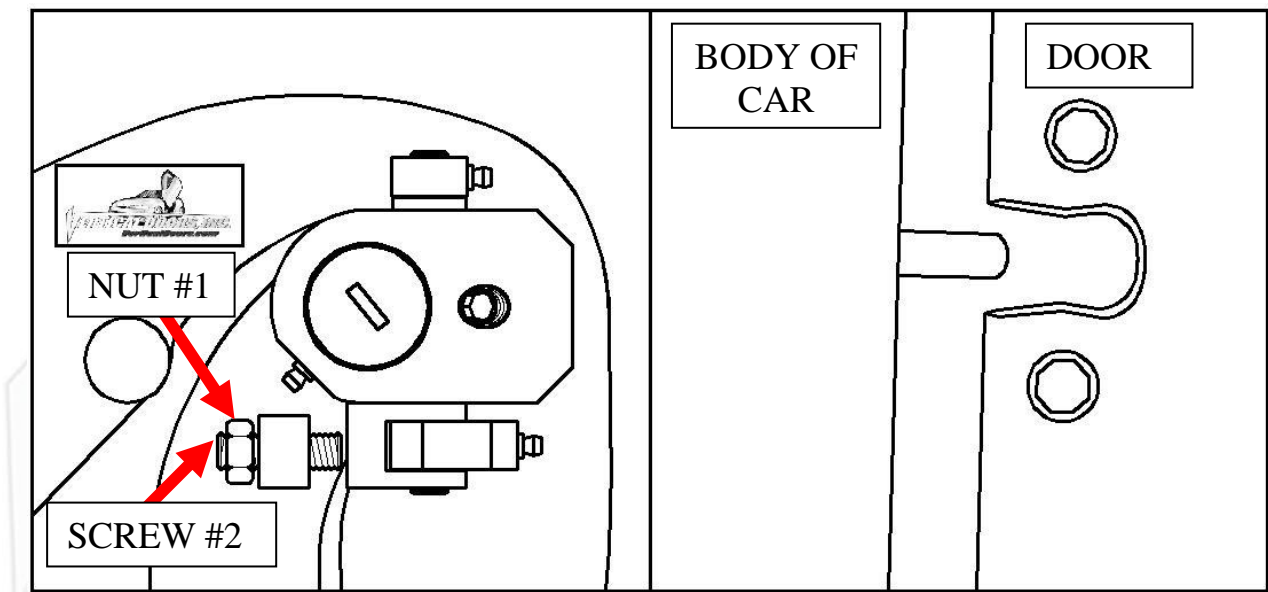
2<sup>ND</sup>, make sure you put red Loctite, where the arrow is pointing, on thread of shoulder bolt.

3<sup>RD</sup>, make sure you put grease on the bottom side of the shock end.



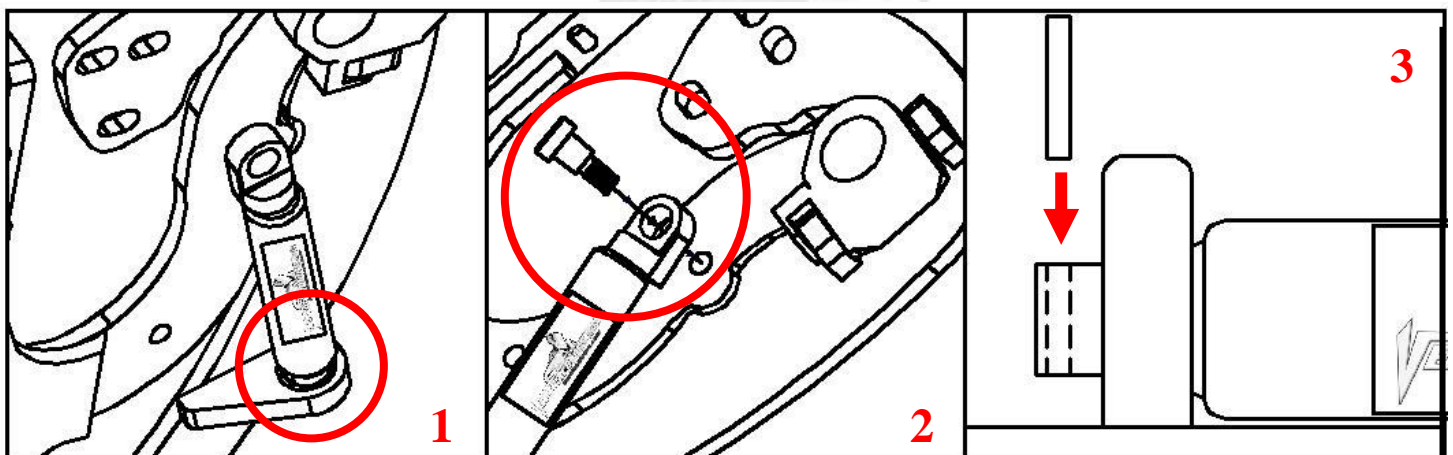
**WARNING! THE USE OF ANY TYPE PLYERS, PAINT OR FOREIGN MATERIALS ON THE SHOCK'S BODY OR SHAFT WILL VOID THE WARRANTY.**

7) Once hinge is locked in place, break nut #1 then turn Allen set screw #2 on fig until it hits the block then open the door and continue to adjust until the door matches with the striker, open and close door making sure it closes like factory.



*Hint\**(leave #1 nut loose until shock is installed Allen set screw will have to be re-adjusted after shock is installed).

8) Install the shock.

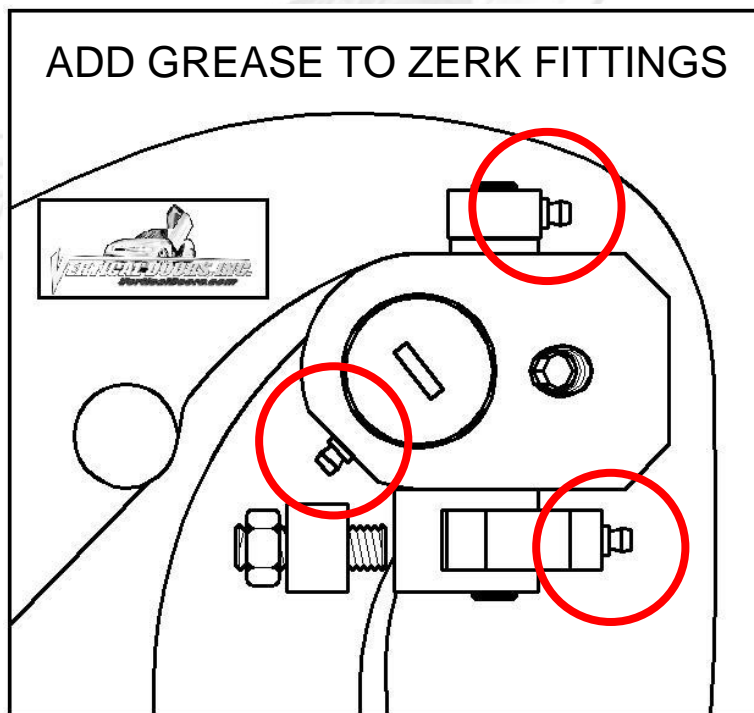
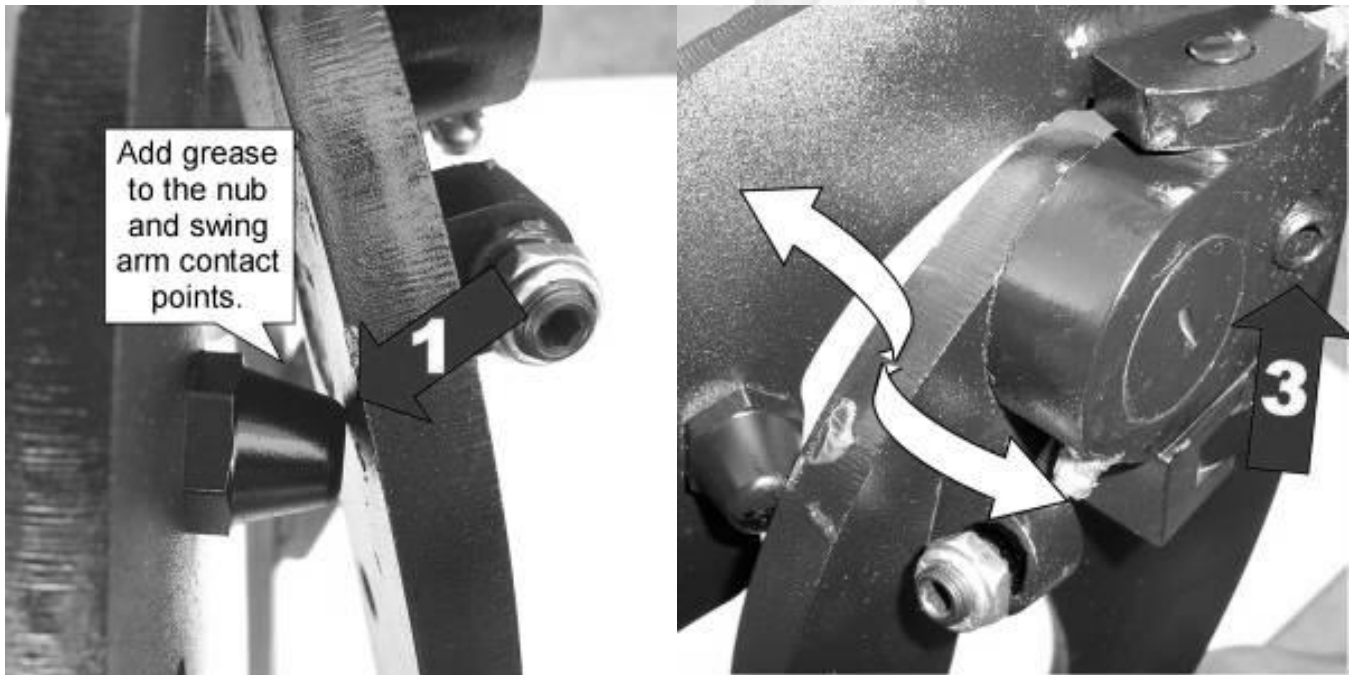


*Hint\** (You will need a helper to raise the door). (Slip the spherical rod mount into the spherical ball bearing (1). Using a 1/4 Allen wrench, tighten the screw into the swing arm (2). After the shock is installed secure it by installing the pin in the bottom shock end (3).



9) After shock is installed re-install door panel and lift the door. Adjust door opening screw #3 clockwise until distance between nub and swing arm is enough so that the swing arm moves up and down freely.

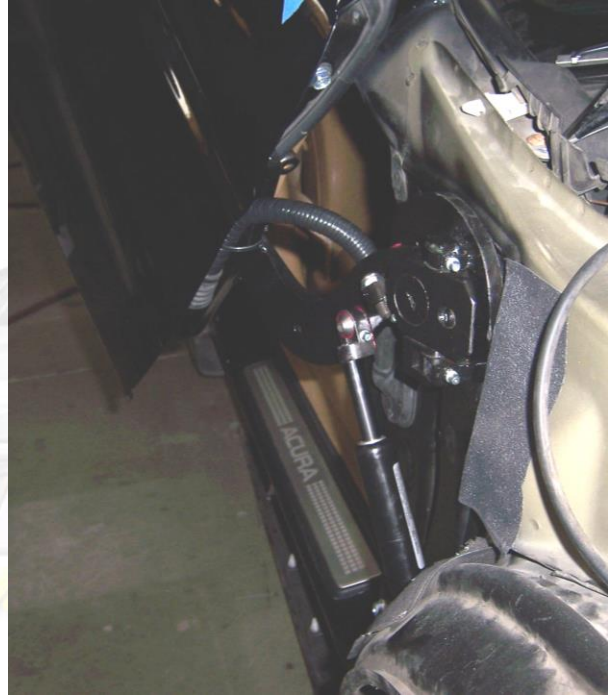
*Hint\* (Fine tune the Allen Adjustment screw (#2) to realigned striker with door. After the door is align test door by opening and closing, lifting and lowering door several times.*



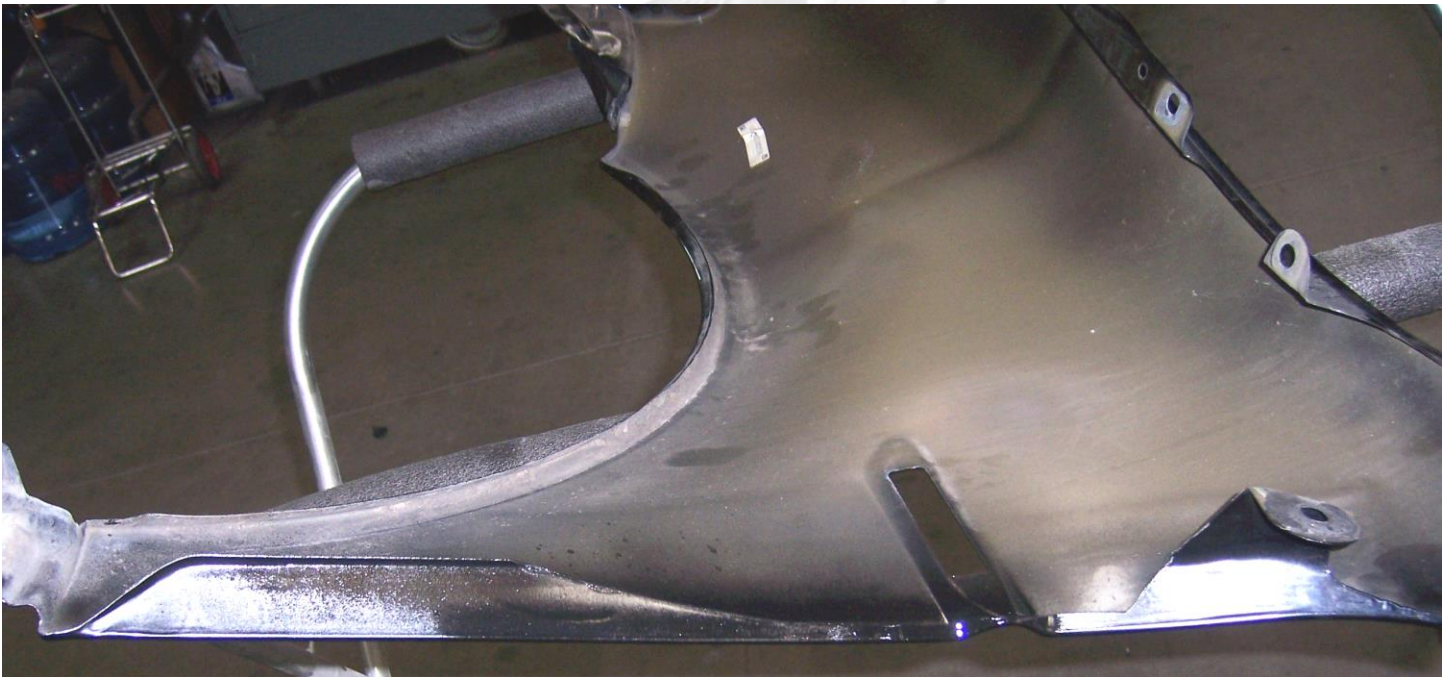
**Note: Do not install fender until the adjustment of the door is accurate, and the set screw is tightly secure. Also make sure everything is tight, adjustment is set and everything is Locktite.**

**10) Wire layout:**

May sure your wires look like the pictures below.



**11) Cut the inner lip of your fender to make room for the new Vertical Doors hinge. Note: After you have cut the fender use a sander or grinder and make sure the surface is completely flat.**



**VERTICAL DOORS, INC.**  
[VerticalDoors.com](http://VerticalDoors.com)



## 12) Side markers

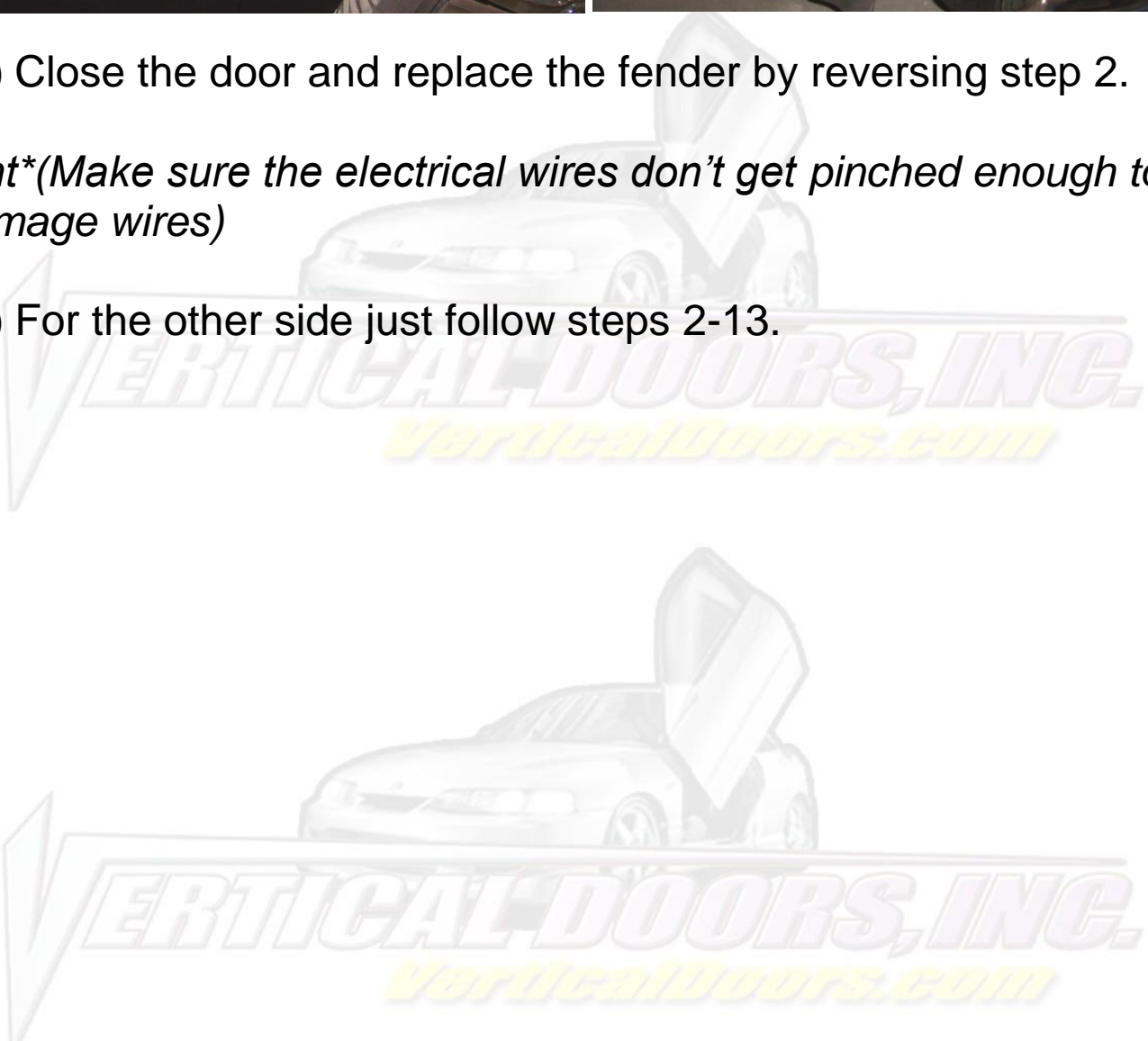
The light on your side marker will have to be eliminated.  
You will have to modify your side marker as shown below.



13) Close the door and replace the fender by reversing step 2.

*Hint\*(Make sure the electrical wires don't get pinched enough to damage wires)*

14) For the other side just follow steps 2-13.

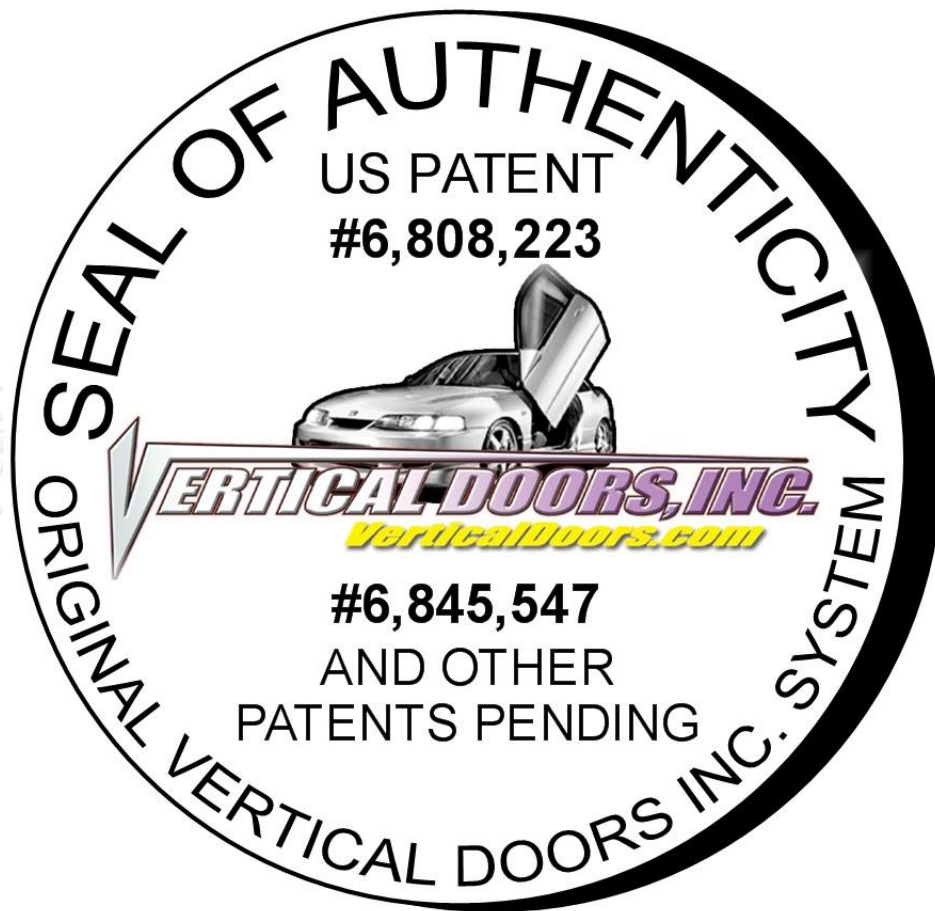


# Thank you for your purchase of the

ACURA TL 04-08

# ***VERTICAL DOORS INC. SYSTEM***

*Simply Uplifting*



**NOTE:**

Vertical Doors Inc. assumes no responsibility for any damages caused by improper installation